

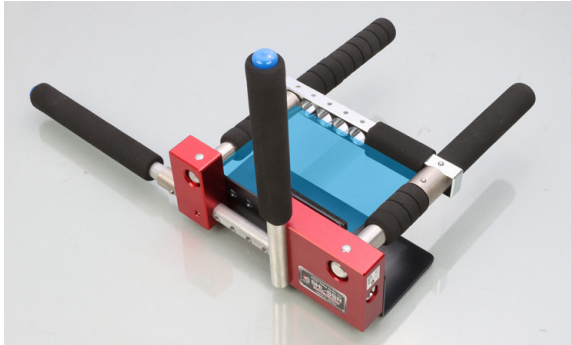


THEFT PREVENTION RELATED PARTS

HIGH UNIVERSAL DESIGN DESPITE MODEL & WHEELS SHAPE!

MAX SPOKE WIDTH 170×127mm (SPONGE INCL.)

MIN SPOKE WIDTH 70×33mm (SPONGE INCL.)



HANDLE LOCK SHL-SSR



APPLICATION

- CONFIRMED TO FIT UNDER SPOKES ON THE FOLLOWING VEHICLES.
- LEXUS** : GX550 (252)、LX SERIES (310)、LC SERIES (100)、LS SERIES (50/55)、RX SERIES (10~17)、NX SERIES (20~26)、UX SERIES (11/16)、LBX SERIES (10/15)、LM SERIES (15)
- TOYOTA** : CH-R (10/11/50)、GR COROLLA (14)、GR YARIS (16)、GR SUPRA A90 (06/26/86)、RAV4 (52/54)、RAV4 (64)、ALPHARD/VELLFIRE30/35・40/45)、VOXY (90/95)、CROWN (30/32)、CROWN ESTATE (38/39)、CROWN CROSS OVER (35)、CROWN SPORTS (36/37)、HARRIER (80/85)、PRIUS (50-55)、PRIUS (60-65)、LAND CRUISER PRADO (150)、HILUX (125)、LAND CRUISER300 (300)、LAND CRUISER250 (250)、LAND CRUISER70 (76)・MARK X (130-135)
- NISSAN**
GT-R (R35)、SERENA (C28)
- DAIHATSU**
HIJET TRACK (S500/S510)
- CONFIRMED TO FIT NEXT TO SPOKES ON THE FOLLOWING VEHICLES. (CANNOT BE INSTALLED BELOW SPOKES)
- TOYOTA** HIACE (200-226/ type 1-8)
- NISSAN** ARIYA (FE0)
- ※REQUIRES TURNING THE STEERING WHEEL TO ADJUST THE POSITION, AND NOT COMPATIBLE WITH SOME VEHICLES EQUIPPED WITH PADDLE SHIFTERS.

CAUTION: For vehicles equipped with auto-away/auto-return function on the steering wheel
For vehicles which steering wheel moves upward when the engine switch is off, make sure to remove and reattach the steering wheel lock with the engine stopped.

NOTE

- UPPER BRACKET : HIGH STRENGTH DURALUMIN/RED ANODIZED FINISH
- UNDER BRACKET : SUPER-HARD ALLOY STEEL /PLATED FINISH
- HORN SHAFT : HIGH STRENGTH DURALUMIN
- HANDLE LOCK SHAFT (LOCK SIDE) : φ25 HARD STAINLESS ALLOY STEEL (ADJUST/LOCK SIDE) : φ22 HARD STAINLESS ALLOY STEEL
- ANTI-ROTATION SIDE SHAFT : HIGH-STRENGTH DURALUMIN
- CUT PROTECTION GUARD : STEEL WITH BLACK BAKING PAINT FINISH
- PATTERN:HANDLE WHEEL THICKNESS (SPONGE INCL.) : 11 PATTERN (33~127mm) HANDLE SPOKE WIDTH (SPONGE INCL.) : 5 PATTERN (70/95/120/145/170mm)
- KEY CYLINDER : **ABLOY SENTRY** (2 PC) ● KEY PATTERN : KEY PATTERN : 360,000,000 PATTERNS ● KEY : 4 INCL. (SPARE KEY INCL.) ● SERIAL CARD : 1 (FOR DUPLICATION) ● 3mm/4mm HEX WENCH 1 EACH ● HEX SOCKET SET SCREW : M6/M8 1 EACH (SPARE) ● COUNTER CAP BOLTS INCL. ● HANDLE PROTETION SHAFT COVER INCL.
- WEIGHT : 6.8kg ● K・TECT SECURITY LEVEL : 130

CODE	PRICE
881-1200000	¥150,000

● SIZE (mm) ※ APPROXIMATE SIZE
 ※1 : SHAFT ADJUSTMENT RANGE : 80 (70) /105 (95) /130 (120) /115 (145) /180 (170)
 ※ () SIZE SPONGE INCL.

